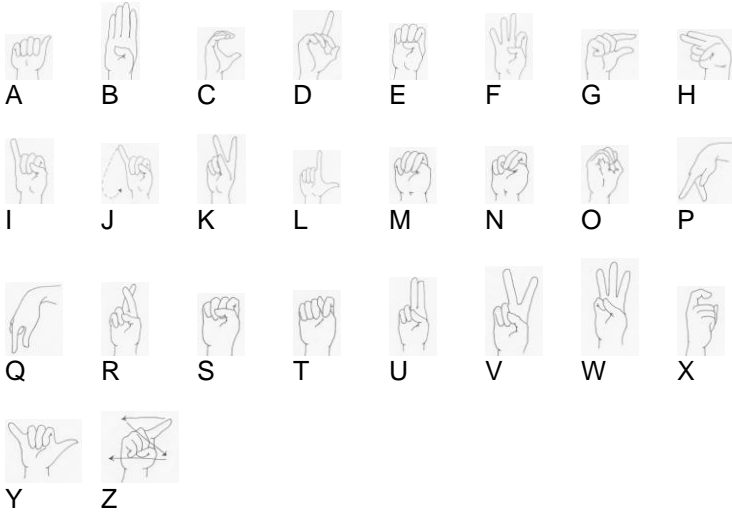
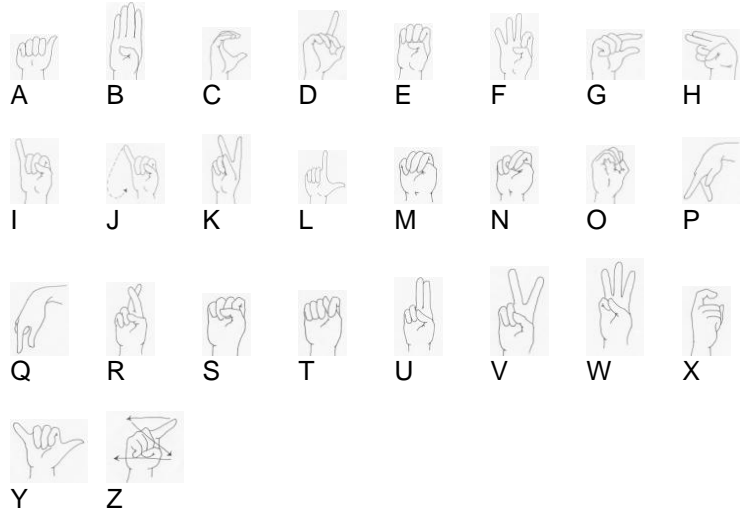


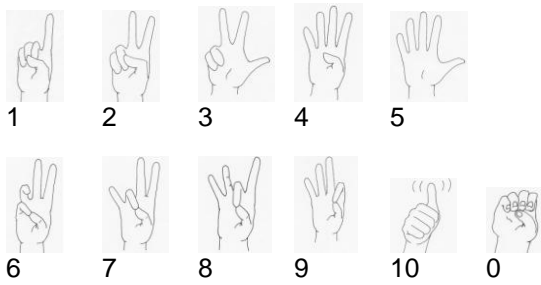
Manual Alphabet



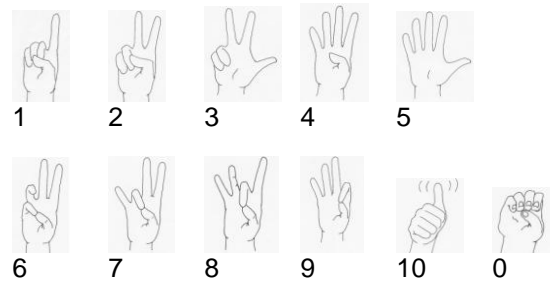
Manual Alphabet



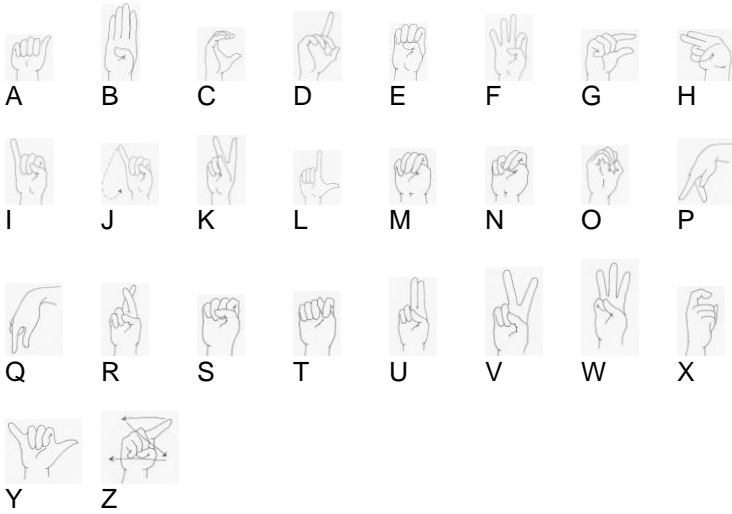
Number Signs



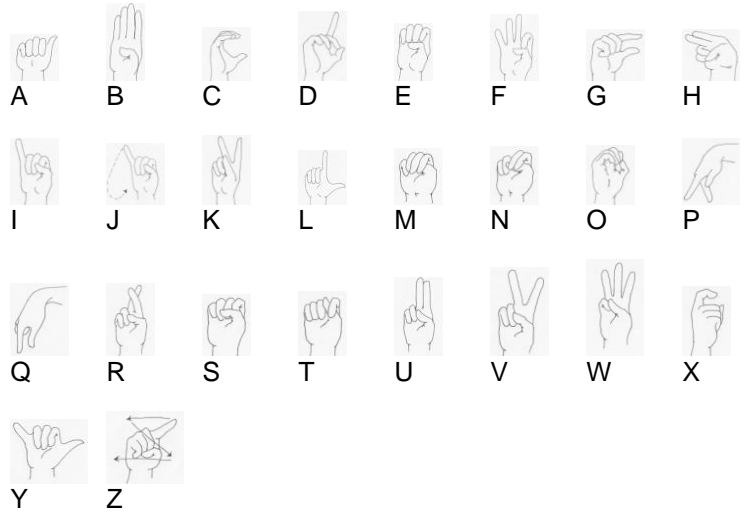
Number Signs



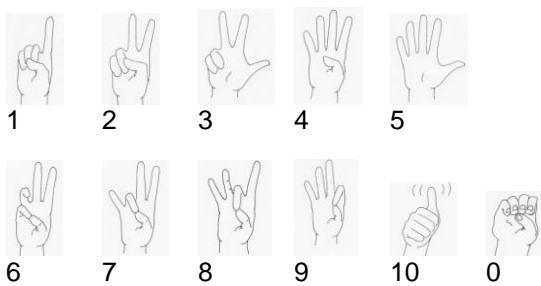
Manual Alphabet



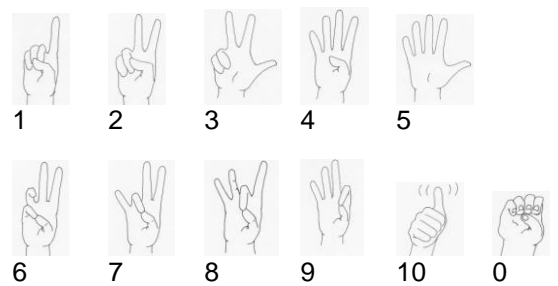
Manual Alphabet



Number Signs



Number Signs



The Society for Creative Anachronism, Inc.

The SCA is an international organization dedicated to researching and re-creating the arts and skills of pre-17th-century Europe. Our "Known World" consists of 18 kingdoms, with over 30,000 members residing in countries around the world. Members, dressed in clothing of the Middle Ages and Renaissance, attend events that may feature tournaments, arts exhibits, classes, workshops, dancing, feasts, and more. Our "royalty" hold courts at which they recognize and honor members for their contributions to the group.

<http://www.sca.org/>

Kingdom of Calontir (*Arkansas, Iowa, Kansas, Missouri, Nebraska*)

<http://calontir.sca.org/>

Barony of the Lonely Tower (*Omaha, Nebraska*)

<http://www.lonelytower.org/>

Barony of Mag Mor (*Lincoln, Nebraska*)

<http://anvil.unl.edu/magmor/>

The Society for Creative Anachronism, Inc.

The SCA is an international organization dedicated to researching and re-creating the arts and skills of pre-17th-century Europe. Our "Known World" consists of 18 kingdoms, with over 30,000 members residing in countries around the world. Members, dressed in clothing of the Middle Ages and Renaissance, attend events that may feature tournaments, arts exhibits, classes, workshops, dancing, feasts, and more. Our "royalty" hold courts at which they recognize and honor members for their contributions to the group.

<http://www.sca.org/>

Kingdom of Calontir (*Arkansas, Iowa, Kansas, Missouri, Nebraska*)

<http://calontir.sca.org/>

Barony of the Lonely Tower (*Omaha, Nebraska*)

<http://www.lonelytower.org/>

Barony of Mag Mor (*Lincoln, Nebraska*)

<http://anvil.unl.edu/magmor/>

The Society for Creative Anachronism, Inc.

The SCA is an international organization dedicated to researching and re-creating the arts and skills of pre-17th-century Europe. Our "Known World" consists of 18 kingdoms, with over 30,000 members residing in countries around the world. Members, dressed in clothing of the Middle Ages and Renaissance, attend events that may feature tournaments, arts exhibits, classes, workshops, dancing, feasts, and more. Our "royalty" hold courts at which they recognize and honor members for their contributions to the group.

<http://www.sca.org/>

Kingdom of Calontir (*Arkansas, Iowa, Kansas, Missouri, Nebraska*)

<http://calontir.sca.org/>

Barony of the Lonely Tower (*Omaha, Nebraska*)

<http://www.lonelytower.org/>

Barony of Mag Mor (*Lincoln, Nebraska*)

<http://anvil.unl.edu/magmor/>

The Society for Creative Anachronism, Inc.

The SCA is an international organization dedicated to researching and re-creating the arts and skills of pre-17th-century Europe. Our "Known World" consists of 18 kingdoms, with over 30,000 members residing in countries around the world. Members, dressed in clothing of the Middle Ages and Renaissance, attend events that may feature tournaments, arts exhibits, classes, workshops, dancing, feasts, and more. Our "royalty" hold courts at which they recognize and honor members for their contributions to the group.

<http://www.sca.org/>

Kingdom of Calontir (*Arkansas, Iowa, Kansas, Missouri, Nebraska*)

<http://calontir.sca.org/>

Barony of the Lonely Tower (*Omaha, Nebraska*)

<http://www.lonelytower.org/>

Barony of Mag Mor (*Lincoln, Nebraska*)

<http://anvil.unl.edu/magmor/>